

# 5971 HB

## CALGARY CAMBRIAN HEIGHTS PLAN SHOWING SUBDIVISION OF

I hereby certify that the contents of this plan have been examined and found to conform with the provisions of the Land Survey Act, R.S.A. 1978, c. S-27, and the provisions of the Land Survey Regulations, S.R.O. 1978, c. 119, and that the plan is correct and complete in accordance with the provisions of the Land Survey Act, R.S.A. 1978, c. S-27, and the provisions of the Land Survey Regulations, S.R.O. 1978, c. 119.

Ref. Cert. 103 413 etc.  
New Cert. 103 104 & 136 incl.  
original  
1957

PART OF THE S.W. 1/4 SEC. 33  
PART OF BLK. Z PLAN 6060 A.J. IN THE N.W. 1/4 SEC. 28  
PART OF BLK. Z PLAN 1648 A.G. IN THE N.W. 1/4 SEC. 28  
PART OF BLK. A.R.C. PLAN 5020 A.R. AND PART OF LOT 2  
IN BLK. B PLAN 1085 S IN THE N.E. 1/4 SEC. 28

ALL IN TWP. 24 RGE. 1 W 5<sup>TH</sup> M

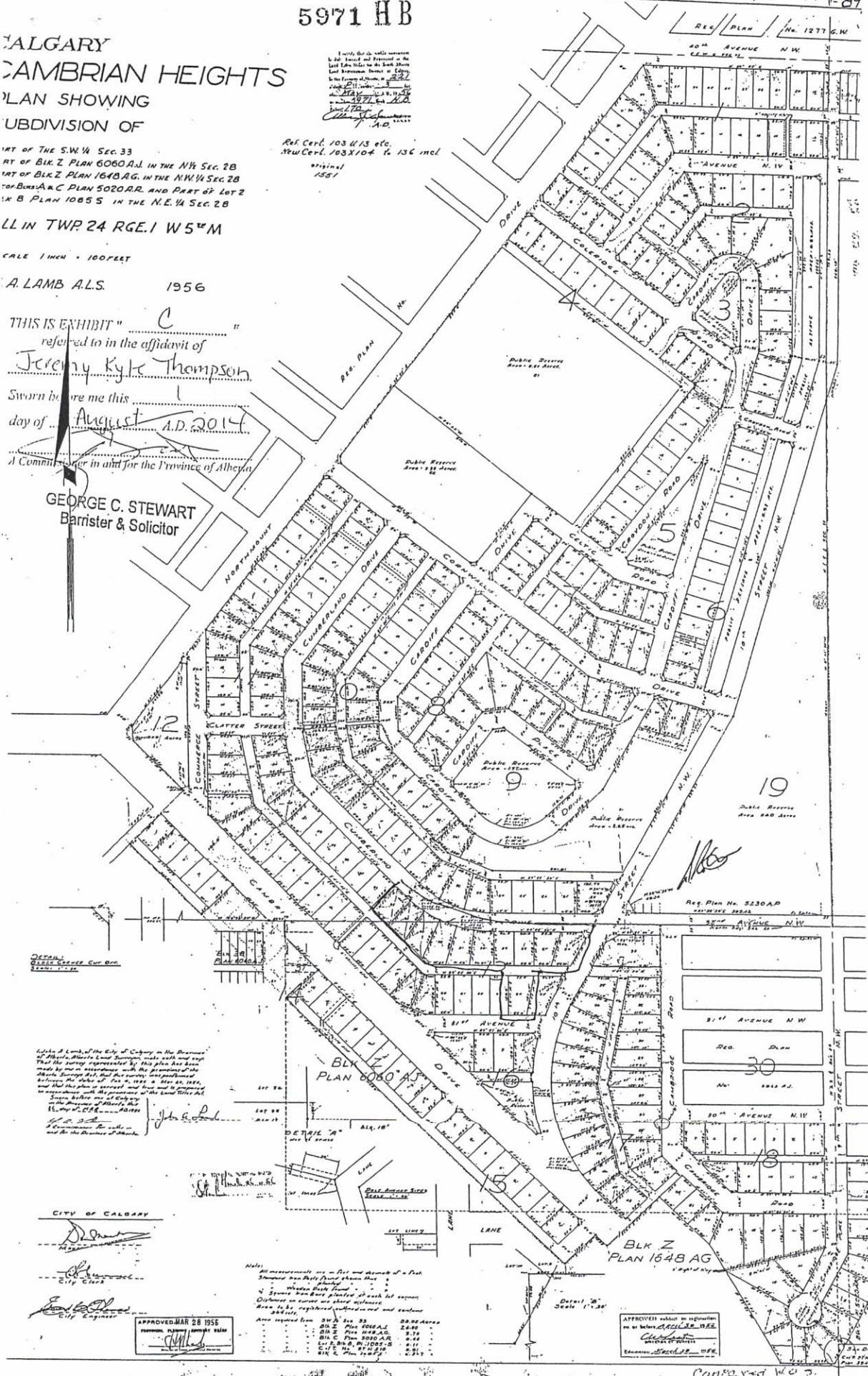
SCALE 1 INCH = 100 FEET

A. LAMB A.L.S. 1956

THIS IS EXHIBIT "C"  
referred to in the affidavit of  
Jeremy Kyle Thompson  
Sworn before me this  
day of August A.D. 2014

A Commissioner in and for the Province of Alberta

GEORGE C. STEWART  
Barrister & Solicitor



DETAIL  
CLASS GRADE CURB  
1:200

I, John A. Lamb, of the City of Calgary in the Province of Alberta, being a Licensed Land Surveyor, do hereby certify that the survey represented by this plan has been made by me in accordance with the provisions of the Land Survey Act, R.S.A. 1978, c. S-27, and the provisions of the Land Survey Regulations, S.R.O. 1978, c. 119, and that the plan is correct and complete in accordance with the provisions of the Land Survey Act, R.S.A. 1978, c. S-27, and the provisions of the Land Survey Regulations, S.R.O. 1978, c. 119.

CITY OF CALGARY

City Clerk

City Engineer

APPROVED MAR 28 1956  
PROVINCIAL PLANNING COMMISSION

Notes

All measurements are in feet and decimals of a foot.

Dimensions are given from the center of the street.

4' zones have been placed at each lot corner.

Distances are shown on street corners and center lines.

Area to be registered, professional and consumer.

|                    |                        |             |
|--------------------|------------------------|-------------|
| Area required from | S.W. 1/4 Sec. 33       | 6,840 Acres |
|                    | BLK. Z PLAN 6060 A.J.  | 24.00       |
|                    | BLK. Z PLAN 1648 A.G.  | 8.74        |
|                    | BLK. Z PLAN 5020 A.R.  | 6.44        |
|                    | BLK. B & D PLAN 1085 S | 8.11        |
|                    | BLK. E PLAN 1210 S     | 8.11        |

APPROVED subject to registration  
as per Section 100  
CITY ENGINEER

COMPOUND W.C.S.