

## What is Housing - Grade-Oriented (H-GO)?

H-GO is a land use district/zone that allows a range of grade-oriented housing. This district adds the option of higher intensity redevelopment than that of R-CG, but still maintains direct ground-level access for all homes.



### Where can H-GO go?

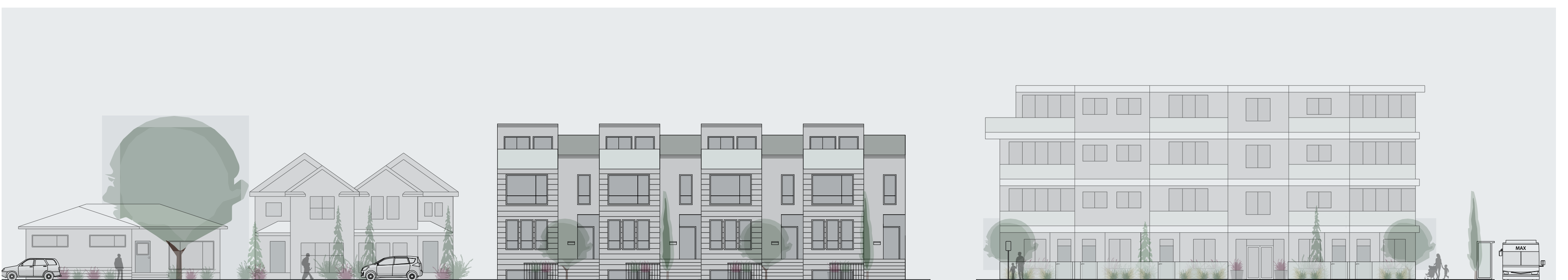
H-GO is a district that is appropriate in locations within a community, typically along streets with a focus on accommodating more pedestrians or streets that connect different parts of a community.

During the creation of this district, the project team listened to the concerns most often raised by the public to ensure rules were created to minimize concerns surrounding landscaping, building separation, storage, and waste and recycling needs.

### What are the specific rules in H-GO?

- Maximum height: 12 metres (approx. 3 storeys)
- Maximum FAR: 1.5 floor area ratio
- Maximum parcel coverage: 45–60%
- Minimum parking requirement: 0.5 stalls per unit and suite
- Permitted uses: New home are permitted in this district as long as the proposal meets the rules of the Land Use Bylaw.

Learn more about citywide rezoning at [calgary.ca/rezoningforhousing](https://calgary.ca/rezoningforhousing).



H-GO example